

---

# INSTALLATION MANUAL

DAS Energy golf cart solar roof  
for TYPE CLUB CAR PRECEDENT i2 | i3



# 1. GENERAL INFORMATION

## 1. SAFETY INSTRUCTIONS AND WARNINGS

Compliance with these installation instructions is a prerequisite for the applicability of the product warranty. Failure to comply with these installation instructions and any resulting damage will invalidate the warranty. DAS Energy reserves the right to modify the products, the technical specifications, and the installation instructions without prior notice.

### 1.1. NOTES ON MODULE HANDLING

The following installation instructions have been provided to avoid errors during installation. Correct handling of DAS Energy modules is essential for the longevity of the product. The following table therefore contains the most important instructions for handling the module.

POSSIBLE SOURCES OF ERROR	TIPS FOR AVOIDING ERRORS
Cell ruptures	<ul style="list-style-type: none"> <li>· Always carry modules in pairs</li> <li>· Turn modules out of the wind (do not offer the wind a surface to attack)</li> <li>· Do not climb on modules</li> <li>· Do not place point loads on the module</li> <li>· Do not bend or bend (note: the modules are flexible, but should only be bent during final assembly on any round mounting surface)</li> </ul>
Damage to module surface	<ul style="list-style-type: none"> <li>· Do not place the module surface directly on rough surfaces (example: bitumen acts like sandpaper and can scratch the module surface).</li> </ul>
Damage Structure	<ul style="list-style-type: none"> <li>· Do not place the module on the corner points</li> <li>· Do not place the module under pressure (do not throw it)</li> <li>· Store modules (especially on the construction site) protected from wind and weather (packaging is not waterproof)</li> <li>· Do not use the junction box or connection cable as a carrying aid. (packaging is not waterproof)</li> <li>· Do not use the junction box or connection cable as a carrying aid</li> </ul>
Cleaning	<ul style="list-style-type: none"> <li>· The module and the components must not be cleaned with a high-pressure cleaner with a pressure washer.</li> </ul>

### 1.2. CLASSIFICATION OF WARNINGS

The warnings used in these instructions are classified as follows



**Immediate danger to life or danger of serious personal injury**



**Warning of corrosive substances**



**Warning of electrical voltage**



**General warning about the risk of material damage**



**Warning of sharp object**

## 2. SCOPE OF DELIVERY

1



Fig. 1 DAS Energy solar panel

2



Fig. 2 Cables with plug

2.a Connection cable 2.5m with circular connector and MC4 PV plug connector

2.b MC4 PV connector

2.c Circular connector

3



Fig. 3 GC10 Charge controller

3.a Battery cable with ring tongue

3.b Round connector

3.c Plug Bluetooth adapter

4



Fig. 4 Bluetooth adapter

5



Fig. 5 Mounting kit

- 5.a 5 pcs. M5 plastic washers
- 5.b 5 pcs. locking nut M5
- 5.c 5 pcs. washers M5
- 5.d 8 pcs. cable ties
- 5.e 2 screws M5x55
- 5.f 3 pcs. screws M5x35
- 5.g 4 pcs. adhesive base
- 5.h 2 pcs. golf balls with hole

6



Fig. 6 2 pcs. sticker

### 3. TOOLS REQUIRED

- Allen set
- Open-end wrench/ratchet SW 8
- Insulated open-end wrench/ratchet SW 13
- Drill/ cordless screwdriver
- Drill Ø4mm and Ø6mm
- Step drill Ø16mm
- Side cutter
- Combination pliers
- Stanley knife
- Cleaning material (degreasing)
- Wire for pulling in the cable

#### 3.1. WARNINGS FOR THE USE OF TOOLS



Improper use of the tools listed can lead to damage to property or personal injury and, in the worst case, can even be life-threatening.



When cutting or deburring with the knife, the blade must always be guided away from the body.



When working on the electrical components, insulated tools and appropriate protective clothing must always be used.

### 4. INSTALLATION MANUAL



Before installation, ensure that the golf cart is switched off using the main switch in the battery compartment.

#### MOUNTING HOLES ON THE GOLF CART ROOF

In this step, the holes required for the module installation must be drilled on the golf cart roof.



Please note that an irreversible modification of the golf cart is required to install the DAS Energy module.

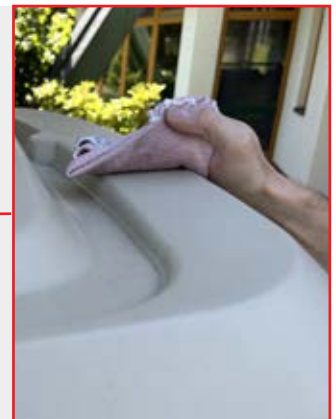
**1** Remove the seat bench from the golf cart



**2** Switch the main switch in the battery compartment to the CLOSE position!



**3** Clean the roof with alcohol (picture with positions)



**4** Place and centre the roof



**5**

Drill the roof through the holes in the module using a 4 mm drill bit (picture of the holes)



**6**

Remove the solar panel from the roof of the golfcart



**7**

Drill 5 marked holes with 6mm centres



**8**

Apply 3 adhesive pads 5.g (picture with positions)



**9**

Put the plastic washers 5.a on 3 screws 5.f and push them through the module and screw them tightly with the spacer bolt



**10**

Open the protective grille with side cutters



**11**

Open the engine compartment lid



**12**

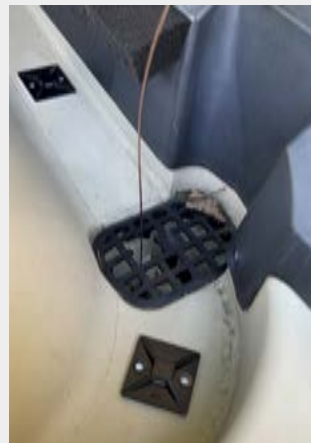
Drill two holes from the engine compartment to the outside above the tyre (1x16mm, 1x6mm)





**13**

Feed the extension cable through the B-pillar (use wire)



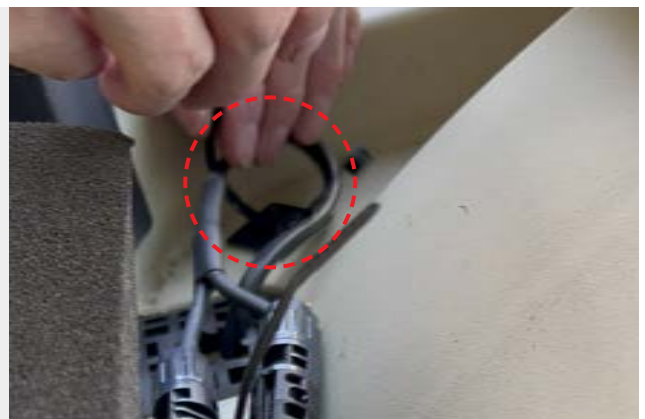
**14**

Plug the PV connector 2.b of the module and the extension cable together



**15**

Fix cables to adhesive pads 5.g using cable ties 5.d



**16**

Place modules on the roof and fix in place with centre adhesive strips



**17**

Place the plastic washers 5.a on 2 screws 5.e and insert them through the module and the golf balls 5.h.



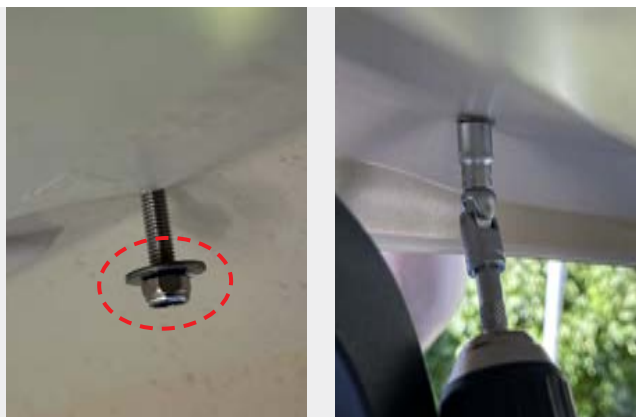
**18**

Remove the foam carrier film and bond the module



**19**

Module using washers 5.c and locknuts 5.b to fix the module



**20**

Feed the cable through the large hole into the engine compartment and secure with a cable tie 5.d



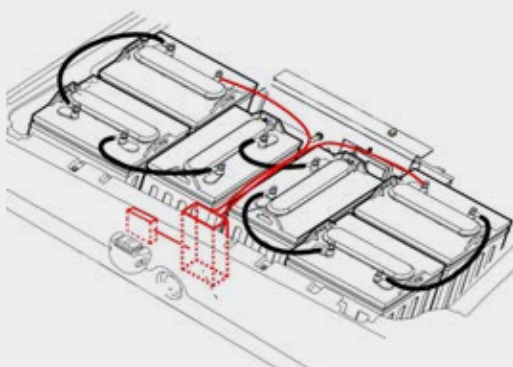
**21**

Insert the cable into the battery compartment



**22**

Install the charge controller and wireless adapter in the front area of the battery compartment (position image)



**23**

Stick the adhesive pad 5.g between the charge controller and the wireless adapter



**24**

Connect the charge controller and wireless adapter to each other



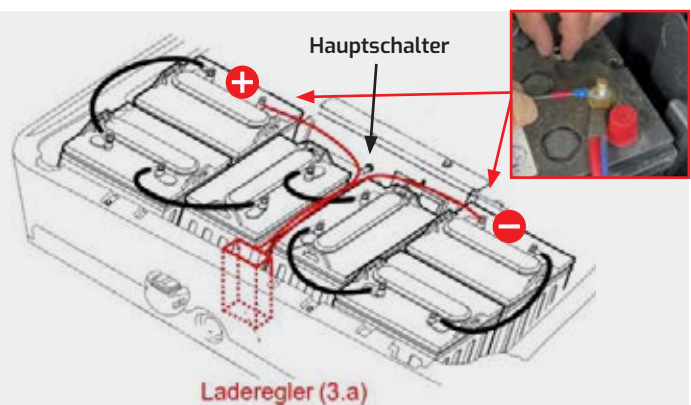
**25**

Fix to the adhesive pad 5.g with cable ties 5.d



**26**

Screw the charge controller cables with ring tongues 3.a to the positive terminal and to the negative terminal of the batteries using an insulated tool



**27**

Plug the round plug connector of the charge controller and the round plug connector of the connection cable together



**28**

Fix all cables with cable ties 5.d



**29**

Close engine cover



**30**

Switch the main switch in the battery compartment to DRIVE!



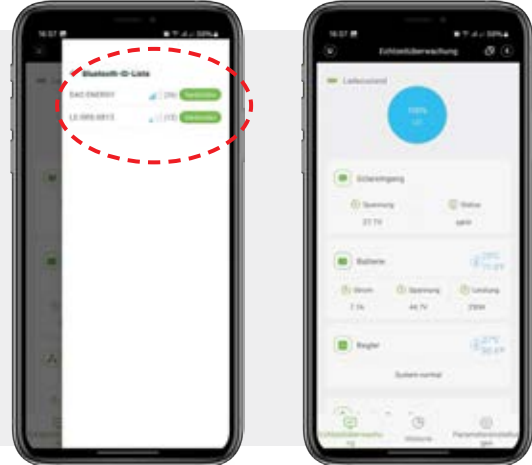
**31** Attach bench



**32** Attach stickers



**33** Download the following app to your mobile phone: ChargePro2.0 and connect the app to the charge controller via Bluetooth.



**34** All important information about the performance of your Golfcart PV module can be viewed there.

**35** The pre-settings in the app should not be changed.

# FOR MORE INFORMATION



[www.das-energy.com](http://www.das-energy.com)



download Data sheets



**DAS Energy Ltd.**  
**Branch Austria**

Ferdinand Graf von Zeppelin Straße 18  
2700 Wiener Neustadt, Austria